



Embrace the Journey

BTAA - Women+ in Technology
Career Journey Mapping Workshop
February 15, 2023

BIG[®]
ACADEMIC ALLIANCE

WELCOME

Ice Breaker

In the chat tell us:

- Where are you FROM?
- What is your FAVORITE COMFORT FOOD?

Embrace the Journey Agenda

01**Welcome**

9:00am – 9:10am CST | 10:00am – 10:10am EST
Laura Gordon & Stacey Zysk

02**Key Notes**

9:10am – 9:35am CST | 10:10am – 10:35am EST
Abeer Elahraf & Courtney Terry

03**Journey Mapping Guides**

9:35am – 9:55am CST | 10:35am – 10:55am EST
Betsy Hillery & Sharkirah Foote

04**Journey Mapping Workshop**

9:55am – 10:35am CST | 10:55am – 11:35am EST
All Participants

05**Closing & Group Discussion**

10:35am – 11:00am CST | 11:35m – 12:00 EST
All Participants

1. WELCOME!

This event has been coordinated by the BTAA – WIT Group

<https://btaa.org/technology/big-ten-academic-alliance-women-in-technology-group>

The WIT peer group was created in 2018 and sponsored by BTAA CIOs to strengthen recruitment, retention, and advancement of women in IT across the Big Ten.

This diverse group has been created to expand connections to one another, and provide a place for respectful dialogue, timely questions, and broad sharing of best practices and insights.

This group is open to staff, researchers, faculty, and administrators at [Big Ten universities](#).

Mini Conference Chairs

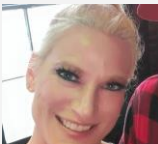


Laura Gordon

Web Developer, School of Arts and Sciences
Rutgers, The State University of New Jersey

Stacey Zysk

Senior Procurement Agent, Information
and Technology Services (ITS),
University of Michigan



Mini Conference Committee Members

Valerie Archambeau

James Boyce

Alona McCreary

Amanda Thorton

PHOTO!

**TURN ON YOUR CAMERA!!!
SHOW US ANY PROMO ITEMS FROM BIG10 THAT
YOU RECEIVED AND SMILE!!!**

2. Key Note Speakers - Courtney



Courtney Terry

Pronouns: She/Her/Hers

Assistant Director of Information Technology
Rutgers New Jersey Medical School

Courtney Terry is an Assistant Director of Information Technology for the Technology Support Services department/Office of COO at Rutgers NJ Medical School. She has twenty years of experience in leading and directing IT projects in medical education technology, launching various projects from inception to implementation.

Courtney leads the Academic & Business Systems team, oversees the educational technologies, academic systems and operational support for Rutgers New Jersey Medical School (RNJMS) and Rutgers School of Graduate Studies (RSGS) in Newark.

2. Key Note Speakers - Courtney

LESSONS LEARNED FROM MY EXPERIENCES

- 1.SELF-PROMOTION- BRANDING AND BUILDING YOUR PRESENCE
- 2.CONFIDENCE
- 3.FIND YOUR VOICE
- 4.CONTINUOUS LEARNING
- 5.BUILD YOUR NETWORK

Courtney Terry

Pronouns: She/Her/Hers
Assistant Director of Information Technology
Rutgers New Jersey Medical School



2. Key Note Speakers - Abeer



Abeer Elahraf, PhD, PMP

Pronouns: She/Her/Hers

Assistant Dean for Data Management and Security
School of Arts and Sciences – Rutgers Newark

Abeer Elahraf is an Assistant Dean for Data Management and Security for the Rutgers School of Arts and Sciences - Newark, Dean's Office as well as a Part-time lecturer in the department of Mathematics & Computer Science. She collects, protects, and optimizes digital information assets to meet academic, financial, and administrative priorities.

She also ensures that applications, data storage, web pages, and back-ups comply with University policies and federal statutes governing the protection and privacy of student and personnel data. She conceptualizes, manages the development and implementation of all application development projects and SASN website & communication. Responsible for oversight of all application development and automation and school- and university-wide information management needs; recommends creative, efficient, and cost-effective application solutions to ongoing information management needs and the school communication.

3. Journey Map Guides

Sharkirah Foote

Information Security Compliance and Training Manager
Rutgers, The State University of New Jersey
OIT – Information Security Office



Betsy Hillery

Director of the Rosen Center for
Advanced Computing (RCAC), **Purdue**



GUIDE TO JOURNEY MAPPING

Betsy A. Hillery and
Sharkirah E. Foote

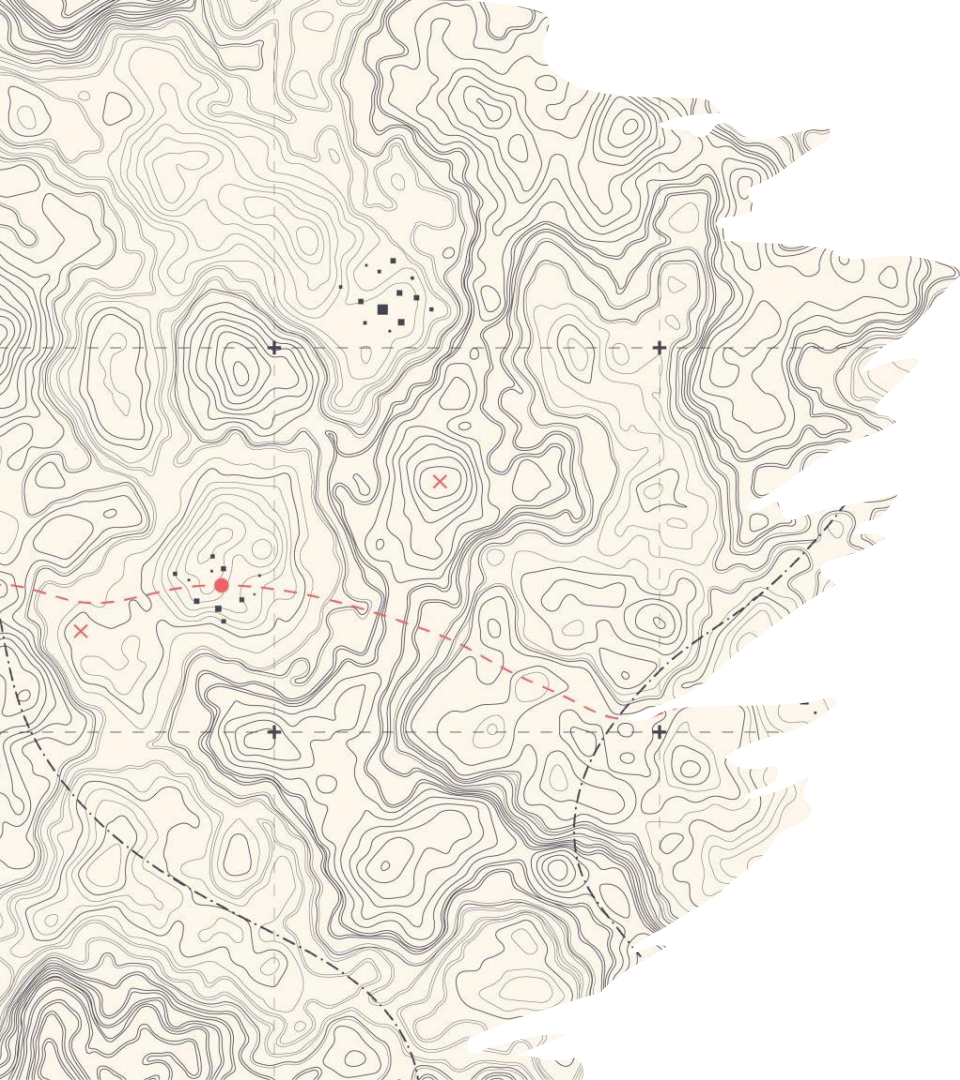




Journey Guides

Betsy A. Hillery is the Director of the Rosen Center for Advanced Computing(RCAC) at Purdue University, primarily responsible for building and deploying High-Performance Computing resources that support Research at Purdue and nationally. With over 20 years of experience at Purdue, Betsy has spent most of her time in the Research Computing area.

Sharkirah E. Foote is a Cybersecurity, Training, Compliance, and Project Management professional with over 20 years' experience in the financial, pharmaceutical, healthcare, and higher education industries. Sharkirah currently works as the Information Security Compliance and Training Manager in the Information Security Office at Rutgers University.



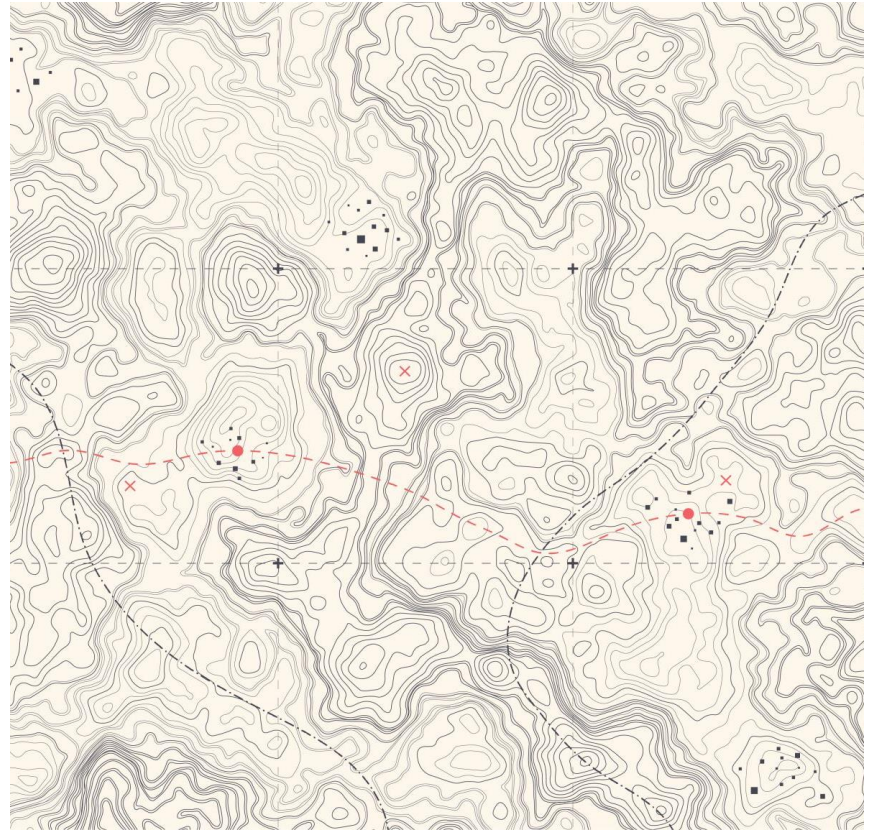
What is a Career Journey Map (Career Lattice)?

- Lattice.com defines the Career Journey/Lattice as --
“Career growth isn’t about staying in your lane. If the corporate ladder represents how people *used* to think about professional growth, the **career lattice** is its successor.”

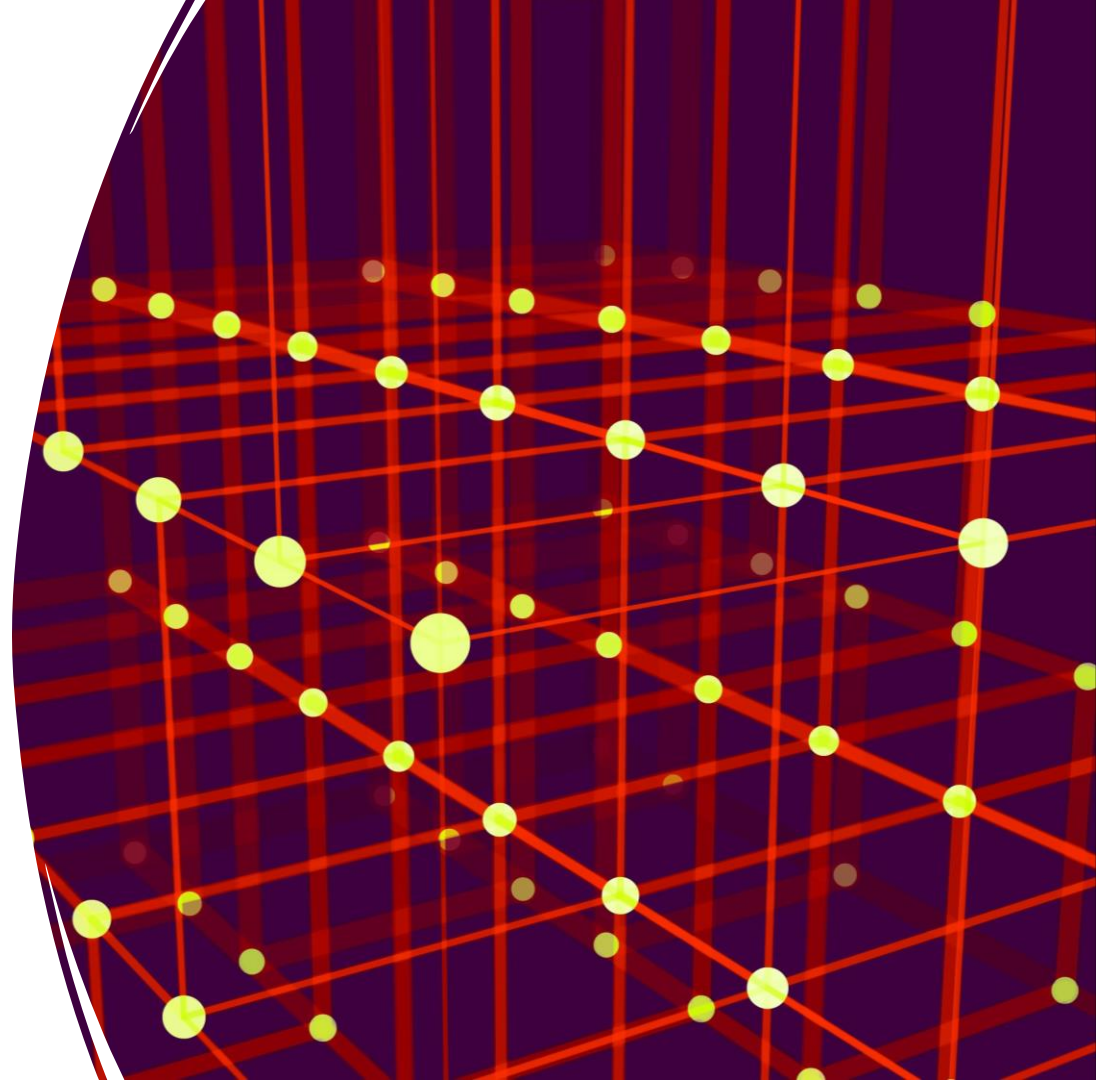
What is a Career Journey Map (Career Lattice)?

(continued...)

“A career lattice is a career progression pathway that allows for vertical, horizontal, and diagonal movement...”



Steve Jobs, 2008 quote:
“You can't connect the
dots looking forward; you
can only connect them
looking backwards. So you
have to trust that the dots
will somehow connect in
your future.”



BEFORE YOU BEGIN – TAKE THE FIRST STEPS

STEP 1

Note your current career status (current state).

STEP 2

Think about the people who have influenced you and the actions taken to get you to this point.

STEP 3

Recall all of the important milestones and accomplishments reached along your journey.

STEP 4

Think about a format that speaks to you.

- Table
- Chart
- Timeline
- Graphical Representation

STEP 5

Start mapping your journey!

Sharkirah's Journey Map



SHARKIRAH E. FOOTE

Sharkirah Foote is a Cybersecurity, Training, Compliance, and Project Management professional with over 20 years experience in the financial, pharmaceutical, healthcare and higher education industries.

She believes that "No one can ever posit themselves as being a better authority on you other than YOU!"

WALL OF ACHIEVEMENT



MAJOR MILESTONES



Graduate - Rutgers Business School
Major Management / M.S. Concentration
Achievements: Deans List / Honors College
Affiliations: President - UC Student Government
Association / Chair - Social Justice Committee

Held a Legacy (EMCON) from Rutgers Biomedical and Health Sciences - Information Security Office



Joined the Rutgers Women in Technology Working Group

Enrolled in Graduate School Rutgers Professional Science Master's Program



Promoted - Information Security Compliance and Training Manager, Information Security Office (Rutgers University)

She / Her • Leader / Mentor • Entrepreneur • Compliance, Training and Project Management Professional

Betsy's Journey Map



NEXT STEPS

- You will have 10 minutes for yourself to complete the template.
- During the 10 minutes, think about --
 - Individuals who have had an impact on your career/leadership journey.
 - Career milestones/events that you are proud of.
 - Life events that have had an impact on your career.
 - Include any community engagement that has impacted your career.
- No pressure! This template will be the foundation for your final Journey Map.



Let's Get
Started!

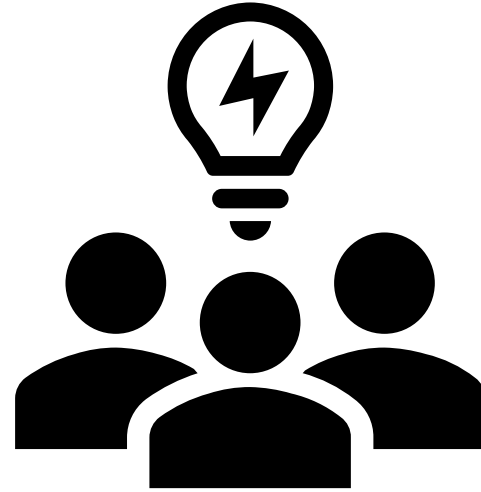


04

Individual Work
10 Minutes



Group Work To Begin



04

Group Work

Teams of 4-5

**28 Minutes (2 minute
count down)**

**Each person share for
5 minutes, then
discuss together
thoughts.**



05

Group Discussion



5.Closing

Give us your feedback:

[Event Feedback Form](#)

Upcoming Events:

BTAA – WIT – Salary Negotiation Panel Discussion

When: March 15th 9am – 10:30am CST (10am-11:30am EST)

[Webinar Registration - Required to Attend](#)

Our Website:

[BTAA WIT Website](#)